



KING TONY NZ

Enjoy your work

KT4042CR06

KING TONY 42 PIECE 1/2" DRIVE 12PT COMBINATION SOCKET SET



**FREE
WINTER
BONUS
ITEM!**



**Only
while
stock's
last!**

**\$255.65
+GST**



LIKE

**WIN WEEKLY SPOT PRIZES
EVERY WEEK DURING AUG
AND SEPT!**

Like our weekly King Tony NZ Gold Standard Facebook posts and go in the draw to win.



**Golden Ratchet
Give Away**

Win instant spot prizes when you find a golden ratchet ticket inside King Tony products!

See back of flyer for details.

Valid: 1st August- 30th September 2017 While stocks last.



LIKE TO WIN



KING TONY NZ
Golden Ratchet Give Away
WIN INSTANT SPOT PRIZES!
See instore for details.

Check out www.kingtony.co.nz to find a distributor near you



LIKE TO WIN



KING TONY NZ
Golden Ratchet Give Away
WIN INSTANT SPOT PRIZES!
See instore for details.

Check out www.kingtony.co.nz to find a distributor near you

KING TONY 12PIECE STANDARD RING & OPEN END SPEED WRENCH SET 8-24MM TET POUCH

18 PC
8-24 mm

KT12112MRN
• 12pce
• Standard ring and open end speed wrench set in pouch

Contains:
• KT3731M series standard ring and open end speed wrenches: 8, 9, 10, 11, 12, 13, 14, 15, 17, 19, 22, 24mm



BONUS
when you buy the
KT12112MRN

KING TONY
Ultra Light King Combination Wrenches set
Ensemble de clés à crans extra-longues et légères
Metallurgisch mit Hartmetallspitzen und Isoliergriffen
Juego de llaves combinadas extra-largas y ligeras

KT12A1MRN
KING TONY 11PC R/OE
ULTRA LONG WRENCH SET
TET POUCH 8-24MM

Contains:
• 8, 10, 12, 13, 14, 16, 17, 18, 19, 22, 24mm

while stock's last!

EXC. GST
\$279⁰⁰
\$310.85 incl GST



All King Tony tools are double nickle dipped to provide outstanding rust resistance.



King Tony tools exceed most international tool standards including DIN (German) and JIS (Japan).

6PIECE R/OE WRENCH SET TET POUCH 34-50MM

KT1296MRN
• 6pce
• Jumbo combination (ring and open end) wrench set in pouch
Contains:
• KT1071 series combination wrenches: 34, 36, 38, 41, 46, 50mm



6 PC
JUMBO
EXC. GST
\$245⁰⁰
\$281.75 incl GST

14PIECE RING & OPEN END WRENCH SET 10-32mm

KT1214MR
• 14pce
• Combination (ring and open end) wrench set in pouch
Contains:
• KT1060 series combination wrenches: 10, 11, 12, 13, 14, 16, 17, 19, 21, 22, 24, 27, 30, 32mm



14 PC
EXC. GST
\$195⁰⁰
\$224.25 incl GST

14PIECE R/OE WRENCH ST 5/16-1.1/4

KT1214SR
• 14pce
• Combination (ring and open end) wrench set in pouch
Contains:
• KT5060 series combination wrenches: 5/16, 3/8, 7/16, 1/2, 9/16, 5/8, 11/16, 3/4, 13/16, 7/8, 15/16, 1, 1.1/8, 1.1/4"



14 PC
EXC. GST
\$195⁰⁰
\$224.25 incl GST

6PIECE PIN PUNCH SET

KT1006PR
• 6pce
• Pin punch set in pouch
Contains:
• KT764 series pin punches: 2 x 30, 3 x 40, 4 x 50, 5 x 50, 6 x 50, 8 x 50



EXC. GST
\$39⁰⁰
\$44.85 incl GST

5PIECE 8" 2ND CUT FILE SET

KT1005GQ
• 5pce file set
8" second cut files with handle
Available with T2 cut for precision work
Contains:
• Files - flat, half round, round, triangle & square



EXC. GST
\$75⁰⁰
\$86.25 incl GST

6PIECE HEAVY DUTY PHIL/SLOT SCREWDRIVER SET

KT30206MR
• 6pce heavy duty Phillips/slot screwdriver set
Contains:
• KT1461-series - Phillips heavy duty screwdrivers: No. 1-3
• KT1462-series - slotted heavy duty screwdrivers: 5.5-8mm



EXC. GST
\$48⁰⁰
\$55.20 incl GST

KING TONY 42PIECE 1/2 DRIVE 12PT COMBINATION SOCKET SET

42 PC

KT4042CR06
• 42pce 1/2" drive 12pt standard socket set
Metal case size: 476 x 282 x 57mm

EXC. GST
\$255⁶⁵
\$294.00 incl GST

while stock's last!



Contains:
• KT4330MR-series - 1/2" drive 12pt standard sockets: 10-32mm
• KT4330SR-series - 1/2" drive 12pt standard sockets: 5/16-1.1/4"
• KT463021R - 1/2" drive spark plug socket
• KT4768-10F - 1/2" drive reversible ratchet
• KT4251-series - 1/2" drive extension bars: 5 & 10"
• KT4752-12 - 1/2" drive sliding t-handle
• KT4452-18FR - 1/2" drive flexible handle

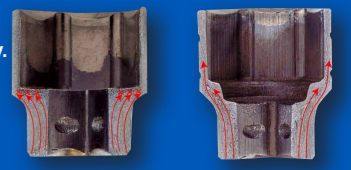


WITH BONUS ITEM!

- Sockets are colour coded.
- Easy to establish between metric and imperial.
- Metric = Blue
- Imperial = Red



- 30% higher than DIN standard.
- Specialised forging technology.
- Extended life of socket.
- Torque is transmitted for powerful tightening.



24PIECE 12pt 3/4 DR COMBINATION SOCKET SET

KT6224CR
STANDARD
Contains:
• KT6330M-series - 3/4" drive 12pt standard sockets: 22-50mm
• KT6330S-series - 3/4" drive 12pt standard sockets: 1-2"
• KT6779-20F - 3/4" drive reversible ratchet
• KT6572-20 - 3/4" drive sliding t-handle
• KT6251-series - 3/4" drive extension bars: 8 & 16"



3/4" Drive
EXC. GST
\$395⁰⁰
\$454.25 incl GST

48PIECE 1/4DRIVE MET/IMP SOCKET SET

KT2549CR01
• 48pce
• 1/4" drive 6pt standard socket set
Metal case
Contains:
• 1/4" drive 6pt standard sockets - 4-13mm & 5/32-1/2"
• 1/4" drive 6pt deep sockets - 5/32-1/2"
• 1/4" drive reversible ratchet
• 1/4" drive flexible handle
• 1/4" drive extension bars x 2
• 1/4" drive universal joint



48 PC
EXC. GST
\$179⁹⁰
\$205.85 incl GST

15PIECE 1/2DRIVE DEEP IMPACT SOCKET SET

KT4415MP03
• 15pce
• 1/2" drive impact bit socket set
Metal case size: 445 x 135 x 50mm
Contains:
• KT4435M-series - 1/2" drive 6pt deep impact sockets: 10, 11, 12, 13, 14, 15, 16, 17, 19, 21, 22, 24, 27, 30, 32mm



15 PC
EXC. GST
\$145⁰⁰
\$166.75 incl GST

1/2" DR IMPACT WRENCH 650FT.LB/881NM STD

KKT33411-050
• Twin hammer impact wrench
• Nickel chrome molybdenum square driver
• Variable speed trigger
• Muffled on handle exhaust
• Standard anvil
• Standard bolt size: M19 (3/4")
• Free speed: 8,000 rpm
• Maximum torque: 881Nm/650ft.lb
• Overall length: 194mm (7.41/64")
• 1/4" BSPT air inlet
• 3/8" ID air hose
• Air pressure: 90psi/6.2bar



1/2" DRIVE
EXC. GST
\$245³⁰
\$281.75 incl GST

4 PIECE PRY BAR SET

KT97K014
• 4pce pry bar set
Contains:
• KT97K-series - pry bars: 204-608mm



4 PC
EXC. GST
\$95⁰⁰
\$109.25 incl GST

3/4DRIVE IMPACT WRENCH S1/4BSPT

KT33621-075
• Twin hammer impact wrench
• Nickel chrome molybdenum square driver
• Variable speed trigger
• Muffled on handle exhaust
• Standard anvil
• Standard bolt size: M24 (1")
• Free speed: 6,500 rpm
• Maximum torque: 1085Nm/800ft.lb



3/4" DRIVE
EXC. GST
\$518⁰⁰
\$595.70 incl GST



LIKE
TO WIN



KING TONY NZ
Golden Ratchet Give Away
WIN INSTANT SPOT PRIZES!
See instore for details.



Check out
www.kingtony.co.nz
to find a distributor near you

KINGTONY C CLAMP GRIP PLIERS



KT6615-06

- KING TONY C-CLAMP GRIP PLIER 6"
- C-clamp grip plier
- Overall length: 170mm (6.3/4")
- Capacity: 50mm

EXC. GST
\$25⁰⁰
\$28.75 incl GST



KT6615-11

- KING TONY C-CLAMP GRIP PLIER 11"
- C-clamp grip plier
- Overall length: 280mm (11")
- Capacity: 100mm

EXC. GST
\$43⁰⁰
\$49.45 incl GST



KT6615-18

- KING TONY C-CLAMP GRIP PLIER 18"
- C-clamp grip plier
- Overall length: 456mm (18")
- Capacity: 200mm

EXC. GST
\$79⁰⁰
\$90.85 incl GST

DIAGONAL CUT NIPPERS EURO TYPE 163MM



KT6211-06

- Diagonal cutting nipper
- Grip material: PP + TPR
- Polished heads
- European type
- With bevel
- DIN 5749
- Cutting capacities: soft wire - 4.0mm, medium hard wire - 2.8mm, hard wire - 2.0mm & piano wire - 1.6mm
- Overall length: 163mm (6.1/2")

EXC. GST
\$19⁰⁰
\$21.85 incl GST

DIAGONAL CUT NIPPERS HEAVY DUTY 200MM



KT6231-08

- Diagonal cutting nipper
- Grip material: PP + TPR
- Polished heads
- heavy duty type
- With bevel
- DIN 5749
- Cutting capacities: soft wire - 5.0mm, medium hard wire - 3.5mm, hard wire - 2.2mm & piano wire - 2.0mm
- Overall length: 200mm (8")

EXC. GST
\$21⁰⁰
\$24.15 incl GST

EURO STYLE COMBINATION PLIERS



KT6111-06

- Combination plier
- European type
- With bevel
- Polished head
- DIN ISO 5746
- Material: PP + TPR
- Cutting capacity: soft wire - 4.0mm, medium hard wire - 2.8mm, hard wire - 1.8mm & piano wire - 1.6mm
- Overall length: 163mm (6.1/2")

EXC. GST
\$19⁰⁰
\$21.85 incl GST



KT6111-08

- Combination plier
- European type
- With bevel
- Polished head
- DIN ISO 5746
- Material: PP + TPR
- Cutting capacity: soft wire - 4.0mm, medium hard wire - 3mm, hard wire - 2.0mm & piano wire - 1.6mm
- Overall length: 213mm (8.1/4")

EXC. GST
\$21⁰⁰
\$24.15 incl GST

32PIECE BIT SET + NO2 SQUARE BIT

32 PC

- KT1032CQ01**
- 32pce
 - Screwdriver bit set
 - 25mm long
- Contains:**
- KT1025S series - slotted: 3, 4, 5, 6mm
 - KT1025P series - Phillips: PH1, PH2 x 2, PH3
 - KT1025Z series - pozi: PZ1, PZ2 x 2, PZ3
 - KT1025T series - torx: T10, T15, T20, T25, 527, T30, T40
 - KT1025H series - hex: 3, 4, 5, 6mm
 - KT1025U series - tamp res torx: T10H, T15H, T20H, T25H, T27H, T30H, T40H
 - KT102502R - square No. 2
 - KT7702-25 - bit adaptor
 - KT753-63 - magnetic bit holder



EXC. GST
\$34⁰⁰
\$39.10 incl GST

EXPANDER RIVETER 3.2 TO 6.4mm



- KT79721**
- Expander tongs framework design to press riveter
 - 4 PC. Interchangeable nozzles
 - Heavy duty riveter for stainless or aluminum rivets

EXC. GST
\$99⁰⁰
\$113.85 incl GST

KING TONY TOOLS ARE WARRANTED AGAINST FAULTY MATERIALS AND MANUFACTURE: All advertised items were available at date of publication from the King Tony & ArLube master agent Fox & Gunn Ltd, Private Bag 94304, Pakuranga, Auckland. The distributor on this publication is an independent distributor who may not have all items available. Fox & Gunn Ltd will endeavour to maintain item availability during the promotional period. Where a product is out of stock there will be no rain checks on the supply of that product or the advertised pricing on that product outside of the promotional dates. If a normal price is shown, this is the national recommended user price. Actual pricing varies from distributor to distributor. Ratchet style in socket sets may differ from that illustrated. All sizes are approximate only. Accessories shown do not come with the item unless specifically listed in the specification. The colours in this catalogue may vary slightly from the actual item. E&OE. (c) Copyright 2017. Reproduction of this publication in whole or in part is prohibited without written approval from Fox & Gunn Ltd. All King Tony Facebook give aways during August and September 2017 are at the discretion of Fox & Gunn Ltd.

Find a King Tony NZ Distributor near you
www.kingtony.co.nz