

# Arlube<sup>®</sup>

## Lubrication Equipment



*The brand professionals use*

**Arlube<sup>®</sup>** Lubrication  
Equipment

For a comprehensive range of lubrication  
equipment ranging from grease guns, hose  
reels to drum pumps.

May 2016





# Arlube®

## Lubrication Equipment

### Table Of Contents

BOTTLES	28
DIESEL REFUELLING KITS	36
DRUM MOVING	40
DRUM PUMPS	18
FUEL ACCESSORIES	33
FUEL FILTERS	32
FUEL NOZZLES	31
FUNNELS	34
GREASE GUN ACCESSORES	8
GREASE GUN LOADER	11
GREASE GUNS	4
GREASE KITS	12
GREASE NIPPLE ACCESSORIES	45
GREASE NIPPLE KITS	44
GREASE NIPPLES - Imperial	43
GREASE NIPPLES - Metric	42
HOSE REELS	39
MISC	37
OIL DRAINER	30
OIL GUNS	26
OIL MEASURES	29



## GREASE GUNS



### PROFESSIONAL GREASE GUN Lever Action

CODE: ARG2111

- Suitable for use with **450gram** cartridges or bulk grease
- Up to 8,000 psi
- 600cc capacity with bulk grease
- Heavy duty 4 jaw coupler
- Can be loaded from filler pump (ARP3100)
- Includes 150mm rigid extension



### PROFESSIONAL GREASE GUN Trigger Action

CODE: ARG2222

- Suitable for use with **450gram** cartridges or bulk grease
- Up to 6,000 psi
- 600cc capacity with bulk grease
- Heavy duty 4 jaw coupler
- Can be loaded from filler pump (ARP3100)
- Includes 300mm flexible extension



### PREMIUM GREASE GUN Lever Action

CODE: ARG2555

- Suitable for use with **450gram** cartridges or bulk grease
- High pressure - up to 12,000 psi
- Heavy duty 4 jaw coupler
- Can be loaded with a filler pump (ARP3100)
- Includes 150mm rigid extension



## GREASE GUNS

### PREMIUM GREASE GUN Trigger Action

CODE: ARG2666

- Suitable for use with **450gram** cartridges or bulk grease
- High pressure
- Up to 12,000 psi
- Heavy duty 4 jaw coupler
- Can be loaded with a filler pump (ARP3100)
- Includes 300mm flexible extension to get into those difficult to reach places



### ECONOMY GREASE GUN Lever Action

CODE: ARG2000

- Suits **450gram** cartridge
- Develops up to 7,000 psi
- Easy snap on/snap off 4-jaw coupler
- Three way loading - cartridge, bulk grease or filler pump
- Includes 150mm rigid extension



### 18V CORDLESS GREASE GUN

CODE: ARG2230

- Cordless, battery powered grease gun
- 18V battery
- Suits **450gram** cartridge
- Develops up to 10,000 psi
- 75 gram per minute volume grease flow
- 1 hour quick charge
- 2 x 18V long-life NiCad batteries included
- 1m heavy duty high pressure hose
- Up to 5 cartridges of grease on a single charge of the battery
- Three-way loading - cartridge, bulk grease or filler pump
- Heavy duty plastic storage case
- Shoulder strap





## GREASE GUNS



### 18V LI-ION BATTERY GREASE GUN

CODE: ARG2235

- Cordless, battery powered grease gun
- 18V Lithium Ion battery
- Suits **450gram** cartridge
- Develops up to 10,000 psi
- 75 gram per minute volume grease flow
- 1 hour quick charge
- 2 x 18V Lithium Ion batteries included
- 1m heavy duty high pressure hose
- Up to 5 cartridges of grease on a single charge of the battery
- Three-way loading - cartridge, bulk grease or filler pump
- Heavy duty plastic storage case
- Shoulder strap

**LITHIUM-ION**



### PROFESSIONAL GREASE GUN Lever Action

CODE: ARG2333

- Suits **400gram** cartridge
- Develops up to 10,000 psi
- Three way loading - cartridge, bulk grease or filler pump
- 400cc capacity when using bulk grease
- Includes a 150mm rigid extension and a heavy duty 4 jaw coupler
- Delivers a minimum of 28gm/40 strokes



### PROFESSIONAL GREASE GUN Trigger Action

CODE: ARG2444

- Suits **400gram** cartridge
- Develops up to 8,000 psi
- Delivers a minimum of 28gm/40 strokes
- Three way loading - cartridge, bulk grease or filler pump
- 400cc capacity when using bulk grease
- 450mm high pressure flexible nylon hose
- Heavy duty 4 jaw coupler



## GREASE GUNS

### AIR OPERATED GREASE GUN

CODE: ARG5700

- Suits **450gram** cartridge
- Develops up to 6,000 psi
- 360° angle-free head rotation
- Continuous flow
- Three way loading - cartridge, bulk grease or filler pump
- High pressure
- Heavy duty construction



### MINI GREASE GUN Lever Action

CODE: ARG2670

- Develops up to 4,000 psi
- 120cc capacity
- Bulk loading
- Includes heavy duty 4 jaw coupler
- Short stroke lever action
- Fits into difficult to access places



### MINI GREASE GUN Trigger Action

CODE: ARG2240

- Suits **85gram** grease cartridges
- Develops up to 4,000 psi
- 120cc capacity
- Heavy duty 4 jaw coupler
- Two-way loading - cartridge or bulk grease
- High pressure, heavy duty construction
- Two direction outlet





## GREASE GUN - Accessories



### MINI GREASE GUN

CODE: ARG2675

- High pressure
- 1,000 psi
- Easy bulk load
- 80cc capacity



### BUTTON HEAD PUSH ON COUPLER

CODE: ARA2710

- Push on type coupler for standard button grease nipples
- Includes built in swivel
- Zinc alloy



### BUTTON HEAD PULL ON COUPLER

CODE: ARA2705

- Pull on type coupler for standard button grease nipples
- Brass



## GREASE GUNS - Accessories

### QUICK LOCKING GREASE COUPLER

CODE: ARA2750P

- MAX Bursting Pressure: 15,000PSI / 1034bar
- Working Pressure 10,000PSI / 690 bar
- Ultralight 85g only (connector included)
- 74MM X 30MM
- Easy to use in narrow spaces
- Four hardened spring steel jaws are resilient under pressure
- Unique lever design makes coupling and uncoupling effortless
- Suitable for hand, air operated, battery powered grease gun, grease pump
- No splash when disconnecting



### GREASE GUN COUPLER

CODE: ARA2715

- 4 jaw coupler for standard grease nipples
- High delivery due to no midway valve
- Industrial quality
- Easy on and off



### INJECTOR NEEDLE WITH SHROUD

CODE: ARA2701

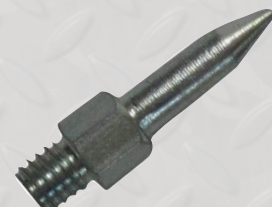
- Case hardened needle point with safety shroud



### REPLACEMENT INJECTOR NEEDLE

CODE: ARA2702

- Case hardened





## GREASE GUN - Accessories



### DRUM SPANNER

CODE: ARA2760

- Aluminium drum spanner
- 3/4" slotted bung end 2" bar bung
- For easy loosening and tightening of small and large drum bungs
- Heavy duty tool



### RIGID EXTENSION

CODE: ARA2720

- 1/8" BSP thread both ends
- Suits all brands of grease guns
- 150mm long



CODE: ARA2730  
700mm



CODE: ARA2725  
200mm



CODE: ARA2726  
300mm



CODE: ARA2727  
450mm

### FLEXIBLE EXTENSIONS

- Highly flexible
- Industrial quality
- Minimum burst pressure of 14,400psi
- Spiral wire protector at gun end
- Lengths - 200mm, 300mm, 450mm, 700mm



## GREASE GUN LOADER KIT

### GREASE CARTRIDGE WARMER

CODE: ARA2775

- Use on **450g & 400g** grease cartridges
- Can be used in very low temperatures
- Fast heating
- Plugs into your cigarette lighter

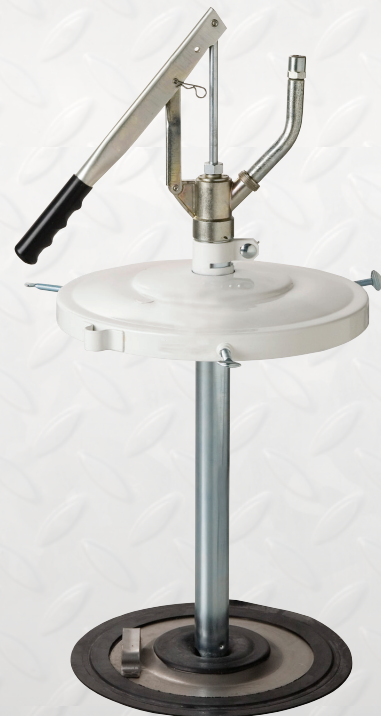


### GREASE GUN LOADER PUMP

CODE: ARP3100

- Suits 20kg drum
- Follower plate is well designed to make a good seal
- Fast bulk filling of grease guns
- Suits most brands of grease guns as pump fits a 9 & 12.5mm connectors
- Made in Spain

*(product supplied may differ slightly from that shown)*





## GREASE KITS



### 2.5KG GREASE KIT

CODE: ARP2944

- Grease pressure of up to 10,000psi
- A highly portable manual greasing pump
- Spring foot load plunger for priming the grease control valve
- Switch for high volume or high pressure delivery
- One-hand grease control valve with rigid tube and 3 jaw coupler
- Comes with 2m hose and a grease pail
- Replacement hand piece available (ARP2999)
- Delivers approximately 1.25grams per strike on high volume setting and approximately 0.45grams per strike on high pressure setting



### 20KG HAND OPERATED GREASE KIT

CODE: ARP2955

- Up to 10,000psi grease pressure
- High volume/high pressure setting
- Excellent substitute for air operated
- Suits 20kg grease drum
- Dust cover: ID 311mm; Follower plate: OD 292mm
- More economical than air operated pumps
- Comes with 3m hose
- Replacement hand piece (ARP2999) available
- Delivers approximately 1.25grams per strike on high volume setting and approximately 0.45grams per strike on high pressure setting

*(product supplied may differ slightly from that shown)*



## GREASE KITS - Air operated

### 20KG AIR OPERATED GREASE KIT With Handle

CODE: ARP5510

- 50:1 ratio air operated pump
- 4M of hose
- Grease gun with swivel joint
- Follower plate with rubber rim
- Easy positive greasing
- Compact size
- Drum cover designed for easy changing of drum



### MOBILE 20KG AIR OPERATED GREASE KIT

CODE: ARP5125

- Made in Italy
- 50:1 ratio air operated grease pump
- Small size
- Easy changing of drum or bucket
- Fast greasing operation
- Equipped with a grease follower plate
- Fits 20kg grease drum
- Two fixed wheels
- Very easy to handle
- Equipped with a pump support
- Quality alloy grease control valve

*(product supplied may differ slightly from that shown)*





## GREASE KITS - Air operated



### 55KG AIR OPERATED GREASE KIT

CODE: ARP5110

- Made in Italy
- 50:1 ratio air operated grease pump
- Compact in size
- Allows for easy changing of drum or bucket
- Quick greasing of any mechanism
- Equipped with a grease follower plate
- Fits 50-60kg drums

*(product supplied may differ slightly from that shown)*



## GREASE KITS - Accessories

### GREASE CONTROL VALVE Flexible

CODE: ARA5112

- Inlet 1/4" BSP female
- Includes multi-directional grease swivel
- 4-jaw coupler
- 400mm flexible extension



### OIL CONTROL VALVE On/Off

CODE: ARA5110

- Made in Spain
- Heavy duty oil control valve
- Flexible, swivelling outlet hose gets to hard to reach places
- 1/2" BSP female swivel inlet
- Heavy duty aluminium
- No drip nozzle

*(product supplied may differ slightly from that shown)*



### MULTI-DIRECTIONAL GREASE SWIVEL

CODE: ARA5100

- Multi- directional swivel
- 1/4" BSP male and female threads

*(product supplied may differ slightly from that shown)*





## GREASE KITS - Accessories



### GREASE CONTROL VALVE

CODE: ARA5105

- Lightweight, strong, cast aluminium control valve
- 1/4" BSP female inlet thread
- Made in Spain

*(product supplied may differ slightly from that shown)*

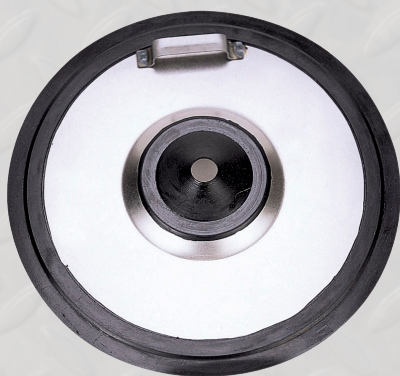


### OIL CONTROL VALVE With Electronic Meter

CODE: ARA5115

- Made in Italy
- Electronic meter displays delivered and totals
- Flexible, swivelling outlet hose gets to hard to reach places
- Maximum flow rate of 20LPM
- Powered by AAA batteries
- Accurate to  $\pm 0.65\%$
- 1/2" BSP swivel inlet

*(product supplied may differ slightly from that shown)*



### FOLLOWER PLATE

CODE: ARP5190

- Suits 20kg drum
- Industrial quality

*(product supplied may differ slightly from that shown)*



## OIL TRANSFER KITS

### HEAVY DUTY OIL TRANSFER KIT

CODE: ARP5520

- 3:1 ratio air operated pump
- Suits 205L drum
- Transfers 18L per minute
- 4M of hose
- Suitable for all engine oil, gear oil & differential oil



### OIL TRANSFER KIT - AIR OPERATED With Oil Control Valve

CODE: ARP5115

- Suits 205L drums
- Transfer rates of up to 40LPM
- Ideal for the transfer of low viscosity fluids such as oil, antifreeze and coolant
- Includes a high quality 1:1 ratio pump, 3m hose to a quality on/off control valve
- Made in Italy

*(product supplied may differ slightly from that shown)*



### OIL TRANSFER KIT - AIR OPERATED With Metered Oil Control Valve

CODE: ARP5120

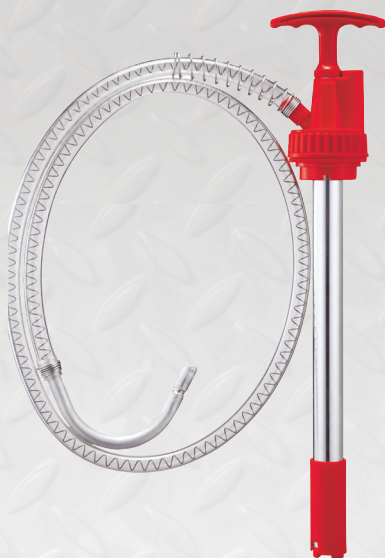
- Suits 205L drums
- Transfer rates of up to 15LPM
- Suitable for all engine, gearbox and differential oils
- High quality 3:1 ratio pump
- 3m hose
- Control valve with resettable electronic meter with total showing the amount of lubricant dispensed
- Oil transfer and metering made easy
- Made in Italy

*(product supplied may differ slightly from that shown)*





## DRUMP PUMPS - Push & Pull



### 20L DRUM PUMP Oil

CODE: ARP3428

- Suits 20L drums
- 10 strokes per litre
- Suitable for engine, differential, gear and hydraulic oils
- Ideal for topping up engines, differentials and gear boxes
- Nozzle drains back into drum after use
- 1.5m of anti-kink hose

*(product supplied may differ slightly from that shown)*

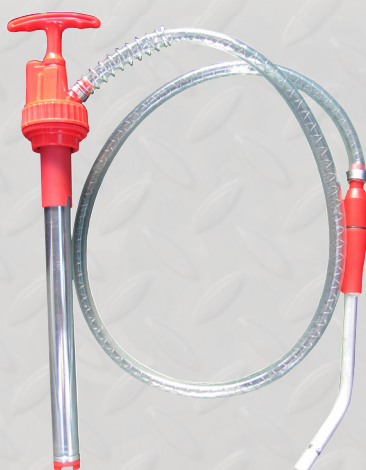


### 20L DRUM PUMP

CODE: ARP3420

- Suits 20L drums
- 10 strokes per litre
- Suitable for engine, differential, gear and hydraulic oils
- Ideal for topping up engines, differentials and gear boxes
- Nozzle drains back into drum after use
- With rigid spout

*(product supplied may differ slightly from that shown)*



### 20L DRUM PUMP ATF

CODE: ARP3426

- Suits 20L drums
- For automatic transmission fluid
- 14 strokes per litre
- Drains back into drum after use
- 1.5m of anti-kink hose

*(product supplied may differ slightly from that shown)*



## DRUMP PUMPS - Spring

### 20L DRUM PUMP Gear Oil

CODE: ARP3492

- Suits 20L drum
- Approximately 3.5 strokes per litre
- 1.5m anti-kink hose
- Lever operated trigger nozzle
- Drain back nozzle holder

*(product supplied may differ slightly from that shown)*

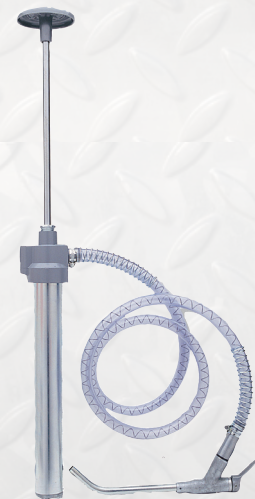


### 20L DRUM PUMP ATF

CODE: ARP3493

- Suits 20L drum
- For automatic transmission fluid
- Approximately 3.5 strokes per litre
- 1.5m anti-kink hose
- Lever operated trigger nozzle
- Drain back nozzle holder
- Replaceable stainless steel mesh filter

*(product supplied may differ slightly from that shown)*

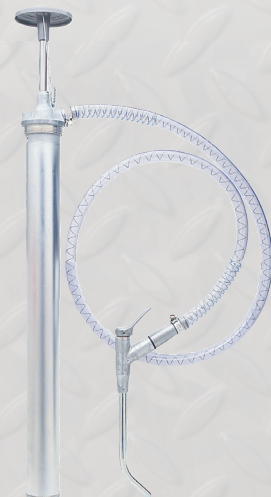


### 60L DRUM PUMP Gear Oil

CODE: ARP3498

- Suits 60L drum
- Approximately 2 strokes per litre
- Heavy duty
- Quality mechanism
- 1.5m anti-kink hose
- Dispensing nozzle and drain back nozzle holder

*(product supplied may differ slightly from that shown)*





## DRUMP PUMPS - Spring



## DRUMP PUMPS - Rotary

### 205L DRUM PUMP Rotary

CODE: ARP3250

- Suits 205L and fits 60L drums
- Up to 25LPM
- Suitable for petrol, diesel, kerosene and light oils
- Cast alloy pump body
- 1.2m of 25mm polypropylene discharge hose, without nozzle
- Can syphon and transfer fuels in reverse



### 205L DRUM PUMP Rotary

CODE: ARP3255

- Suits 205L and fits 60L drums
- Up to 23LPM
- Suitable for petrol, diesel, kerosene and light oils
- Cast alloy pump body
- 2.2m of 25mm heavy duty fuel hose and dispensing nozzle
- Can syphon and transfer fuels in reverse



### 205L DRUM PUMP Hi-Volume Refuelling

CODE: ARP3260

- Suits 205L and fits 60L drums
- Up to 100LPM
- Fast and efficient pumping of petrol, diesel or kerosene
- 10 micron inlet filter included
- Complete with 1.3m of polypropylene hose
- Heavy duty





## DRUMP PUMPS - Rotary



### 205L DRUM PUMP Hi-Volume Refuelling

CODE: ARP3265

- Suits 205L and fits 60L drums
- Up to 100LPM
- Fast and efficient pumping of petrol, diesel or kerosene
- 10 micron inlet filter included
- 2.8m heavy duty farm hose to metal spout
- Heavy duty
- With spout holster - stops dripping



## DRUMP PUMPS - Lever Action

### 205L & 60L DRUM PUMP Oil Transfer

CODE: ARP3370

- Suits 205L and 60L drums
- 250cc per stroke
- Suitable for diesel, oil, kerosene, coolant and ATF
- Can also be used for other light to medium viscosity lubricants
- Quality mechanism
- Dual bung threads for both drum types



### 205L DRUM PUMP Refuelling

CODE: ARP3325

- Suits 205L and fits 60L drums
- Delivers up to 40LPM, 1L per stroke
- Suitable for the transfer of petrol, diesel, kerosene and light oils
- Lockable handle





## DRUMP PUMPS - Chemical



### 205L DRUM PUMP Polypropylene Rotary Action

CODE: ARP8210

- Suits 60L or 205L drums
- Delivers up to 20LPM
- Suitable for the transfer of petrol, diesel, water, light grade oil, herbicides, pesticides, chemicals and mild detergents - chemical compatibility list available
- Polypropylene, ryton and stainless steel metallic parts offer good chemical resistance
- Unique, rotating 2 piece discharge spout assists fluid transfer



### 205L DRUM PUMP Ryton Rotary Action

CODE: ARP8215

- Suits 60L or 205L drums
- Flow rates of up to 20LPM
- Suitable for the transfer of low viscosity fluids, mild chemicals, mild alkali, petrol, diesel, light grade oil and anti-freeze - chemical compatibility list available
- Body & vanes ryton and stainless steel metallic parts provides excellent chemical compatibility
- Discharge spout can be rotated to different positions



### 205L DRUM PUMP Syphon

CODE: ARP3910

- Suits 205L and fits 60L drums
- Delivers up to 20LPM
- Low cost, disposable pump for the transfer of chemicals and solvents - chemical compatibility list available
- Includes a 875mm pick up tube and a 1.2m delivery hose



## DRUMP PUMPS - Chemical

### 20L DRUM PUMP Stainless Steel

CODE: ARP3430

- Suits 20L drums
- T-handle type
- Suitable for the transfer of ammonia, mild acids and alkalis, nitric acid up to 40% concentration, petrol, oil and diesel
- Stainless steel T316 metallic parts with PTFE seals and PTFE suction tube



### 205L DRUM PUMP Stainless Steel

CODE: ARP8220

- Suits 60L or 205L drums
- Delivers 500ml on the down stroke
- Suitable for the transfer of ammonia, mild acids and alkalis, nitric acid up to 40% concentration, petrol, oil and diesel
- T304 stainless steel components
- Seal, o-rings and piston made of PTFE
- Adjustable outlet spout





## OIL GUNS



### OIL SUCTION GUN

**500cc**

**CODE: ARG3620**

- Quality no leak piston/cylinder design
- Suitable for emptying and filling engines, gear boxes and differentials
- Industrial quality
- Long flexible suction hose
- 500cc capacity



### OIL SUCTION GUN

**1000cc**

**CODE: ARG3625**

- Quality no leak piston/cylinder design
- Suitable for emptying and filling engines, gear boxes and differentials
- Industrial quality
- Long flexible suction hose
- 1000cc capacity



### MINI OIL SUCTION GUN

**200cc**

**CODE: ARG3630**

- Small convenient size
- With plastic hose
- Economical
- 200cc capacity



### POMPOM OIL GUN 300cc

CODE: ARG3602

- Efficient and economical
- 300cc
- Industrial
- Excellent pressures
- To lubricate oil points via oil nipples



### OIL CAN - RIGID SPOUT

CODE: ARC3698

- Features an efficient force-feed metal pump mechanism
- Quality mechanism
- 500cc capacity



### OIL CAN - FLEXIBLE SPOUT

CODE: ARC3699

- Features an efficient force-feed metal pump mechanism
- Quality mechanism
- 500cc capacity





## OIL & CHEMICAL BOTTLES



### OIL & CHEMICAL BOTTLE Brass Spout

CODE: ARC3240

- 125ml
- More accurate dispensing
- Better delivery in compact places
- Lightweight container
- Suitable where a small amount of fluid is required



### OIL & CHEMICAL BOTTLE Rigid Plastic Spout

CODE: ARC3245

- 125ml
- Fine fluid delivery due to fine tip
- Use in hard to reach places
- Assist in keeping a clean environment
- Suitable where a small amount of fluid is required
- Lightweight container



## OIL MEASURES

### OIL MEASURE 1L Polypropylene

CODE: ARM9205

- Strong, heavy duty plastic
- Flexible delivery spout for topping up engines, gear boxes and differentials quickly and easily
- 1L oil measure
- Made in New Zealand



### OIL MEASURE 2L Polypropylene

CODE: ARM9207

- Strong, heavy duty plastic
- Flexible delivery spout for topping up engines, gear boxes and differentials quickly and easily
- 2L oil measure
- Made in New Zealand



### OIL MEASURE 5L Polypropylene

CODE: ARM9212

- Strong, heavy duty plastic
- Flexible delivery spout for topping up engines, gear boxes and differentials quickly and easily
- 5L oil measure
- Made in New Zealand





## MOBILE OIL DRAINER



### MOBILE OIL DRAINER

CODE: ARD3700

- 85L tank
- Strong construction
- Made in Italy
- Large catchment bowl



## FUEL NOZZLES

### FUEL NOZZLE Manual

CODE: ARN4111

- Suitable for leaded petrol, diesel and oil (not suitable for unleaded petrol)
- Flow rate of up to 150LPM
- 1" BSP female swivel outlet
- Suitable for gravity feed from farm tank or electric pump
- Can be locked in on position



### FUEL NOZZLE Manual

CODE: ARN4116

- Suitable for petrol (leaded and unleaded) and diesel
- Flow rate of up to 150LPM
- 1" BSP female swivel outlet
- Suitable for gravity feed from farm tank or electric pump
- Can be locked in on position



### FUEL NOZZLE Auto Shut Off

CODE: ARN4120

- Suitable for leaded petrol, diesel and oil (not suitable for unleaded petrol)
- Compact, lightweight and easy to use
- Flow rates of up to 80LPM
- Can be locked in the on position





## FUEL FILTERS



### FUEL FILTER

CODE: ARN4900

- Fuel filter suitable for use with electric and air pumps, hand pumps and gravity feed
- A 10 micron fuel filter element and a manual drain cock
- 1" BSP inlet and outlet
- Replacement elements readily available

*(product supplied may differ slightly from that shown)*



### REPLACEMENT CARTRIDGE FOR ARN4900

CODE: ARZ4905

- 10 micron fuel filter element

*(product supplied may differ slightly from that shown)*



### BRASS HOSE TAIL 1" BSP

CODE: ARN4205

- Fits fuel nozzles



## FUEL ACCESSORIES

### FUEL METER Turbine Digital

CODE: ARM4700

- Suitable for diesel & kerosene only
- Simple, reliable small & economical
- Turbine measuring system
- 5 digit readout, resettable total
- Flow rate range: 60L/min
- Accuracy to  $\pm 1\%$
- 1" BSPT thread



### FUEL METER Mechanical

CODE: ARM4750

- Suitable for diesel, Kerosene, gasoline & low/medium viscosity liquids
- Reliable, easy to install and simple to calibrate in the field
- Flow rate range: 19-76L/min
- Accuracy to  $\pm 1\%$
- Maximum operating pressure: 150 psi
- Aluminium metering chamber with polybutylene nutating disk
- 1" BSPT thread



### FUEL METER Mechanical

CODE: ARI4108

- Diesel fuel only
- Mechanical gear meter accurate to  $\pm 1.0\%$  between 20-120LPM
- 1" BSP female inlet and outlet thread
- Maximum working pressure of 145psi
- Suitable for both gravity feed or pump applications
- Single delivery measurement up to 999 and total to 999,999 litres

*(product supplied may differ slightly from that shown)*





## FUNNELS



### LARGE GARAGE FUNNEL With Filter

CODE: ARF9120

- 4L capacity
- Polyethylene - chemical and oil resistant
- Removable brass filter
- 190 x 280mm with 30mm outlet
- Robust



### HEAVY DUTY METAL FUNNEL With Filter

CODE: ARF9115

- 1.2L capacity
- Heavy duty metal construction
- Anti splash rim
- Strong plastic outlet
- Removable brass filter
- 160mm diameter 20mm outlet
- Robust



### LARGE FUNNEL With Filter

CODE: ARF9110

- Angular spout is convenient for use in hard to reach locations
- Comes complete with removable filter
- 155mm wide
- Polyethylene - chemical and oil resistant





### FOUR FUNNEL SET

CODE: ARF9105

- A selection of high quality plastic funnels to suit a variety of applications
- Suitable for use with ATF, hydraulic, gear and engine oils and most fuels including diesel and petrol
- Polyethylene - chemical and oil resistant



## DIESEL REFUELLING KIT



### REFUELLING KIT 12V

CODE: ARP4300

- Made in Italy
- Flow rates of up to 40LPM
- 2m long battery cables with alligator clips
- Delivery hose 4m long with manual nozzle
- Duty cycle of 25 minutes on and 25 minutes off
- 3/4" BSP female inlet and outlet
- For diesel fuel only
- Suitable for a variety of applications
- Supplied with tail piece so the user can connect suitable hose for the application

*(product supplied may differ slightly from that shown)*



### MULTI PURPOSE MINI PUMP 1L Bottle

CODE: ARP3915

- Suitable for all oils, automatic transmission fluids, brake fluids
- Capacity 1L
- Not suitable for combustible fluids
- Self-contained unit prevents oil contamination when not in use
- Economical

*(product supplied may differ slightly from that shown)*



### WASTE OIL EXTRACTOR Manual

CODE: ARD3705

- 7.3L capacity
- Can be used in boats for draining bilges
- Can be used to drain engine through the dip stick
- Auto shut off

*(product supplied may differ slightly from that shown)*





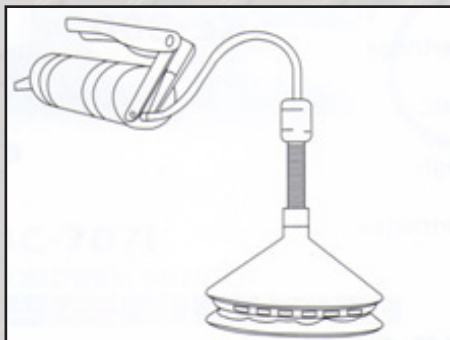
## MISC



### DIGITAL TYRE GAUGE

CODE: ARI9005

- 5psi to 150psi measuring range
- Accurate to  $\pm 1\%$
- Two position lever for inflation and deflation
- Display powered by 2 CR2032 Lithium batteries
- Battery life of 140 hours
- Can be turned on and off as required
- Aluminium body



### UNIVERSAL BEARING PACKER

CODE: ARA2765

- Easy to use with either air or hand operated grease guns
- Working height between cones: 0-50mm
- Use as portable or bench mounted
- Bearing capacity: minimum 10mm ID; maximum 135mm OD
- For roller and ball bearings



## HOSE REELS

### COMPACT AIR HOSE REEL 15M

CODE: ARR7115

- Industrial quality
- Metal mounting bracket
- Hose position lock
- 15m x 8mm ID hose



### AIR HOSE REEL 20M

CODE: ARR7120

- Industrial quality
- Metal mounting bracket
- Metal carry handle
- 20m x 3/8" ID hose



### WATER HOSE REEL 20M

CODE: ARR7220

- Industrial quality
- Metal mounting bracket
- Metal carry handle
- Replaceable hose
- 20m x 1/2" ID hose
- Nozzle holder
- Water nozzle included





## HOSE REELS

### AIR REEL OPEN STEEL FRAME 5M X 3/8ID

CODE: ARR7415

- 15m
- Air hose reel
- Open steel frame
- Industrial quality
- Temperature: -5° to 45°C
- Includes 1m inlet hose
- Metal mounting bracket
- Fitting: 1/4" BSP
- Working pressure: 24 bar/348 psi
- Can be mounted on wall or ceiling for 180° swivel
- Automatic retractable rubber hose with latch
- 15m x 3/8" ID hose



### AIR REEL OPEN STEEL FRAME 20M X 3/8ID

CODE: ARR7425

- 20m
- Air hose reel
- Open steel frame
- Industrial quality
- Temperature: -5° to 45°C
- Includes 1m inlet hose
- Metal mounting bracket
- Fitting: 1/4" BSP
- Working pressure: 24 bar/348 psi
- Can be mounted on wall or ceiling for 180° swivel
- Automatic retractable rubber hose with latch
- 20m x 3/8" ID hose



### AIR REEL OPEN STEEL FRAME 5M X 3/8ID

CODE: ARR7435

- 15m
- Air hose reel
- Open steel frame
- Industrial quality
- Temperature: -5° to 45°C
- Includes 1m inlet hose
- Metal mounting bracket
- Fitting: 1/4" BSP
- Working pressure: 24 bar/348 psi
- Can be mounted on wall or ceiling for 180° swivel
- Automatic retractable rubber hose with latch
- 15m x 1/2" ID hose





## HOSE REEL SWIVEL BRACKET FOR ARR7415, ARR7425 & AR7435

CODE: ARR7415

•Heavy duty independent swivel for open steel  
frame air hose reels

suits:

-ARR7415

-ARR7425

-ARR7435





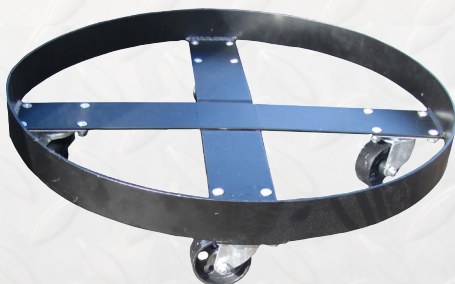
## DRUM MOVING



### DRUM LIFTER Vertical

CODE: ART9410

- For use with 205L drums
- Maximum load capacity of 500kg - 5 times safety factor
- 50mm suspension hole diameter
- Epoxy paint finish
- Can be used on drums with or without lids



### DRUM DOLLY 20L/20kg

CODE: ART9420

- Suits 20L/20kg drum
- 4 x castors



### DRUM TROLLEY Heavy Duty

CODE: ART9425

- For use with 20L and 60L drums
- Very easy to use
- Heavy duty

*(product supplied may differ slightly from that shown)*



## DRUM MOVING

### DRUM TROLLEY 185kg Heavy Duty

CODE: ART9415

- Provides an easy and convenient means of moving drums around
- Includes two solid rubber wheels and two rubber swivelling wheel with bracket
- Up to 220kg capacity
- Tray: 700mm wide 65mm deep
- Drum clamping device

*(product supplied may differ slightly from that shown)*





## GREASE NIPPLES - Metric



### GREASE NIPPLES - Metric

BULK PACK				
CODE	SIZE	ANGLE	PACK QTY	
ARX61001	6 x 1mm	Straight	100	
ARX61002	6 x 1mm	45° Elbow	100	
ARX61004	6 x 1mm	90° Elbow	100	
ARX61101	8 x 1mm	Straight	100	
ARX61102	8 x 1mm	45° Elbow	100	
ARX61104	8 x 1mm	90° Elbow	100	
ARX61121	8 x 1.25mm	Straight	100	
ARX6112	8 x 1.25mm	45° Elbow	100	
ARX6114	8 x 1.25mm	90° Elbow	100	
ARX61201	10 x 1mm	Straight	100	
ARX61202	10 x 1mm	45° Elbow	100	
ARX61204	10 x 1mm	90° Elbow	100	
ARX6121	10 x 1.5mm	Straight	100	

10 PACK - CLAMSHELL				
CODE	SIZE	ANGLE	PACK QTY	
ARX61001P	6 x 1mm	Straight	10	
ARX61002P	6 x 1mm	45° Elbow	10	
ARX61004P	6 x 1mm	90° Elbow	10	
ARX61101P	8 x 1mm	Straight	10	
ARX61102P	8 x 1mm	45° Elbow	10	
ARX61104P	8 x 1mm	90° Elbow	10	
ARX61201P	10 x 1mm	Straight	10	



## GREASE NIPPLES - Imperial



### GREASE NIPPLES - Imperial

BULK PACK				
CODE	SIZE	ANGLE	PACK QTY	
ARX63401	1/8" BSP	Straight	100	
ARX63402	1/8" BSP	45° Elbow	100	
ARX63403	1/8" BSP	67.5° Elbow	100	
ARX63404	1/8" BSP	90° Elbow	100	
ARX63601	1/4" BSP	Straight	100	
ARX63602	1/4" BSP	45° Elbow	100	
ARX66601	1/4" UNF	Straight	100	
ARX66602	1/4" UNF	45° Elbow	100	
ARX66603	1/4" UNF	67.5° Elbow	100	
ARX66604	1/4" UNF	90° Elbow	100	
ARX66606	1/4" UNF	28mm (1.1/8") long	100	
ARX62601	1/4" BSF	Straight	100	
ARX62701	5/16" BSF	Straight	100	
ARX65601	1/4" NPT	Straight	100	

10 PACK - CLAMSHELL				
CODE	SIZE	ANGLE	PACK QTY	
ARX63401P	1/8" BSP	Straight	10	
ARX63402P	1/8" BSP	45° Elbow	10	
ARX63404P	1/8" BSP	90° Elbow	10	
ARX63601P	1/4" BSP	Straight	10	
ARX66601P	1/4" UNF	Straight	10	
ARX66604P	1/4" UNF	90° Elbow	10	
ARX62601P	1/4" BSF	Straight	10	



## GREASE NIPPLE KITS



(product supplied may differ slightly from that shown)

### GREASE NIPPLE ASSORTMENT 100pce Metric

**CODE: ARX69101**

**Contents (10 of each):**

- 6x1mm Straight
- 6x1mm 45° Elbow
- 6x1mm 90° Elbow
- 8x1mm Straight
- 8x1mm 45° Elbow
- 8x1mm 90° Elbow
- 10x1mm Straight
- 10x1mm 45° Elbow
- 10x1mm 90° Elbow
- 10 x 10x1.5mm Straight



(product supplied may differ slightly from that shown)

### GREASE NIPPLE ASSORTMENT 100pce Metric/Imperial

**CODE: ARX69308**

**Contents (10 of each):**

- 6 x1mm Straight
- 8 x1mm Straight
- 10x1mm Straight
- 1/8" BSP Straight
- 1/8" BSP 45° Elbow
- 1/8" BSP 90° Elbow
- 1/8" BSP Button Head
- 1/4" BSP Straight
- 1/4" UNF Straight
- 1/4" UNF Long



(product supplied may differ slightly from that shown)

### GREASE NIPPLE ASSORTMENT 100pce Imperial

**CODE: ARX69005**

**Contents (10 of each):**

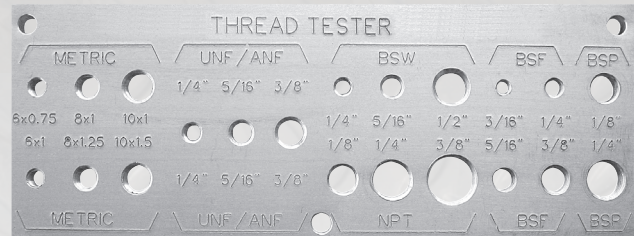
- 1/8" BSP Straight
- 1/8" BSP 45° Elbow
- 1/8" BSP 67.5° Elbow
- 1/8" BSP 90° Elbow
- 1/8" BSP Button Head
- 1/8" NPT Straight
- 1/4" BSP Straight
- 1/4" UNF Straight
- 1/4" UNF Long
- 1/4" BSF Straight



## GREASE NIPPLE KITS - Accessories

### THREAD TESTER

CODE: ARA6910



- Includes all popular sizes including BSP, metric, NPT, UNF, BSW & BSF

### GREASE NIPPLE DUST COVER

CODE: ARX69999

- Easy identification of lube points
  - Helps keep grease nipples and bearings dirt free and dry
- (product supplied may differ slightly from that shown)*























Arlube lubrication equipment is distributed by Fox & Gunn Ltd New Zealand  
6 Te Apunga Place, Mt wellington, Auckland 1060  
Ph: 09 270 1830 Email: [sales@foxgunn.co.nz](mailto:sales@foxgunn.co.nz) Visit: [www.foxgunn.co.nz](http://www.foxgunn.co.nz)